

# Intelli-Mixer™ RM-2

it's a class by itself

## 15 mixing modes

- ▶ The state-of-the-art Intelli-Mixer is equipped to perform each and every type of test tube mixing with brilliant efficiency.
- ▶ This versatile unit comes standard with a mixed test tube rack, supporting 0.5 to 50 ml test tubes. Additionally, 3 optional rack-lengths are available, along with an assortment of accessories to satisfy your specific lab needs.
- ▶ Outfitted with 2 vortex frequencies, this powerful mixer is capable of simultaneously vortex-mixing up to 42 Eppendorf tubes.

Powered by V-Spin – the world's most advanced, patented mixing and liquid-handling technology – the Intelli-Mixer RM-2 is truly the latest in cutting-edge science. V-spin harnesses the energy of an unequaled stepper motor, allowing for a wide variety of mixing, vibrating, and rotating cycles. This multipurpose unit is a rotator, vortex mixer, and blotter all in one. Designed to be cold room safe, and with an unprecedented 34 modes of operation, this versatile piece is unrivaled in today's market.

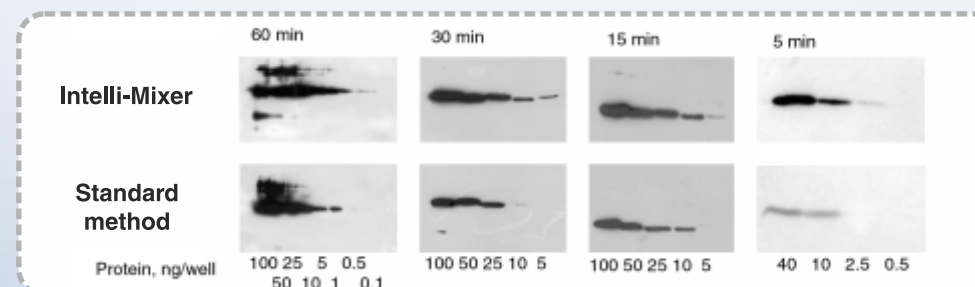
## 3 custom modes

- ▶ Equipped with 3 custom programs, The Intelli-Mixer allows for any combination of mixing, rotating, and pausing to be configured.
- ▶ Designing your own customized routine is as easy as holding the rack in your hand and then rotating it in any direction and at any angle.
- ▶ Every move is saved in the memory for future use.



## 4 Blotting modes

- ▶ The Intelli-Mixer's ultrasonic, vibration blotting modes are specifically designed for western blot protocol.
- ▶ Rigorously tested, this blotting method has consistently excelled in the following areas:
  - sensitivity** – shown to be up to 20 times more sensitive;
  - speed** – 3 to 5 times faster;
  - specificity** – up to 4 times less likely to have cross-reactivity;
  - savings** – up to 12 times less likely to require the use of reagents.



## 12 Rocking modes

- ▶ The Intelli-Mixer's powerful motor drive combined with the thoughtfully designed rocking program ensure a consistently reliable, high performance in all 12 applications.
- ▶ Its speed controller automatically alternates between RPM and Shakes Per Minute to guarantee precise control and reproduction.
- ▶ The innovative design of the rocking platform, with anti-slip surface, provides ample room for a variety of samples while insuring no turnover even in the event of a power outage.

Rocking platform



Blotting rack



Mix rack



Rack 30



Rack 16



Rack 13



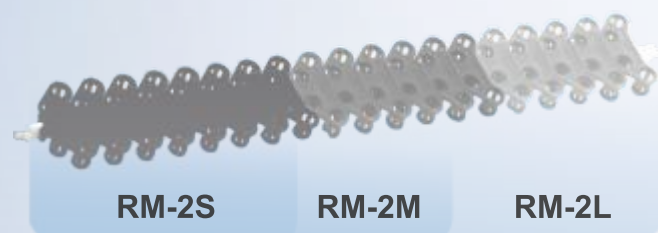
Rack 11



Rack 8



## Optional rack length



## Custom racks by request



## Technical specifications

Rotation speed	RPM	from 1 up to 99
Rotation speed settings step	RPM	1
Overall number of operation regimes		28 standard + 3 custom
Environmental temperature	°C	from 10 to 45
Relative air humidity (at 20 °C)	%	up to 80
Power supply adaptor		DC 12V, 1.5 A

## Tubes fitment

Rack name	Suitable tube dimensions	Max number of tubes		
		RM-2S	RM-2M	RM-2L
Rack 8	Diameter: 7.5 - 8 mm Length: 14 - 130 mm	28	32	44
Rack 11	Diameter: 8 - 11 mm Length: 20 - 130 mm	28	32	44
Rack 13	Diameter: 11 - 13 mm Length: 20 - 130 mm	24	28	38
Rack 16	Diameter: 14 - 16 mm Length: 60 - 150 mm	14	16	22
Rack 30	Diameter: 25 - 30 mm Length: 60 - 150 mm	8	10	14
Mix rack	30mm/16mm/13mm/11mm	2/4/4/8	2/4/8/8	2/4/12/16
Blotting rack	Diameter: 25 - 30 mm Length: 60 - 130 mm	6	6	12
Rocking platform	Flat flasks	1+	1+	1+