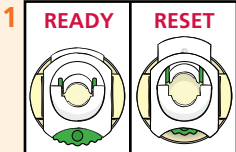


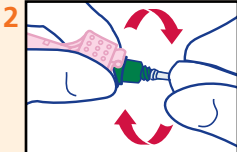
# BD Vacutainer® Pronto™

## Quick Release Needle Holder

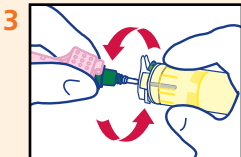
### QUICK REFERENCE CARD



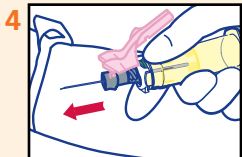
- Ensure BD Pronto™ Holder mechanism is ready to accept new collection device
- If not, press white reset button as shown in step 6



- As indicated for particular collection device, remove white (non-patient-end) cap
- BD Pronto™ Holder is compatible with all BD Vacutainer® blood collection devices



- While pushing into BD Pronto™ Holder, secure collection device to holder by turning hands in opposite directions 1/4 turn until needle is fully sealed onto holder
- **DO NOT OVERTORQUE**

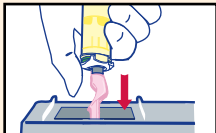


- As indicated for particular collection device, remove coloured (patient-end) needle cap
- Perform venipuncture according to your facility's established procedure. As indicated for particular collection device, engage safety mechanism

# BD Vacutainer® Pronto™ Quick Release Needle Holder

## QUICK REFERENCE CARD

5



- Dispose of collection device into nearest approved sharps container:
  - Hold device in a downward position over container opening, push green button on holder to release collection device into container
  - Ensure white reset button is not obstructed by other fingers

6



- To reuse BD Pronto™ Holder, push white reset button

## CAUTION:

- Handle all biologic samples and blood collection sharps (lancets, needles, luer adapters and blood collection sets) according to the policies and procedures of your facility
- Obtain appropriate medical attention in the event of any exposure to biologic samples (for example, through a puncture injury) since they may transmit viral hepatitis, HIV (AIDS) or other infectious diseases
- Utilize any safety-engineered feature if the blood collection device provides one
- Discard all blood collection "sharps" in biohazard containers approved for their disposal.
- As verified by testing, the possible number of uses per BD Pronto™ Quick Release Needle Holder is 100. As per CLSI guidelines, the holder may be cleaned periodically using a 10% bleach solution (NCCLS M29-A2, Vol. 21, No. 23). Autoclaving or the use of 100% bleach solution will impact performance of these products.